

Introduction

Thank you for choosing our product. The case is designed to fit mini-iTX motherboard.

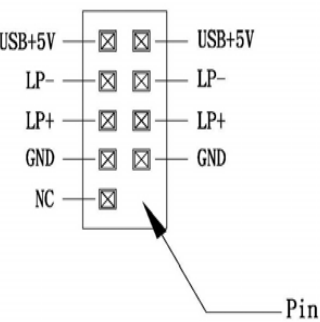


Specification

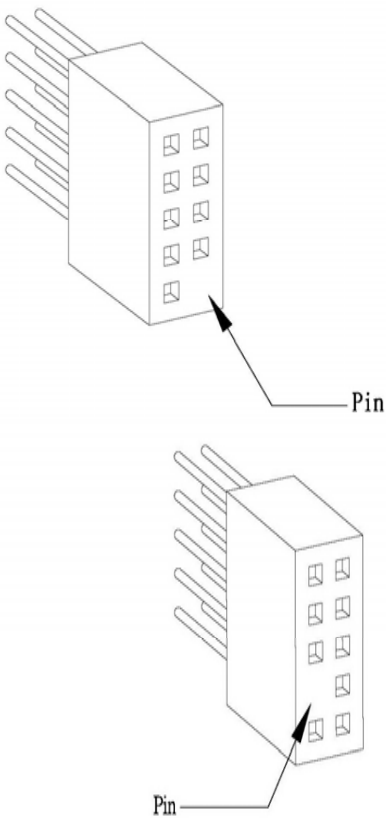
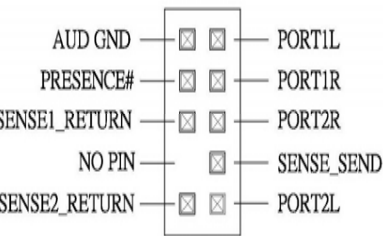
Material	ABS front panel / SECC body	
Motherboard	Mini-iTX (17cm x 17cm)	
Drive Bay	External	5.25" x 1
	Internal	3.5" x3 (one hidden)
Cooling Fan	Front: 12cm fan x 1 Rear: 8cm fan x 1	
Front I/O	USB 2.0 x 2, HD Audio x 1, MIC x 1	
Power supply	300W	
Expansion Slot	1	
Dimension	350mm(D) x 200mm(W) x 213mm(H)	
Expansion Card	Up to 265mm expansion card	

Front I/O Pin Definition

USB 2.0 connector



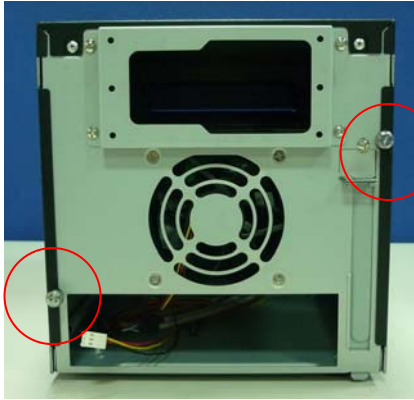
HD connector



Screw Bag contains

1. Cable Tie, 80mm====>3pcs
2. Screw, 6#*5====>6pcs
3. Screw, M3*4====>8pcs
4. Screw, 6#*6====>8pcs

1. System Installation



1.1 Remove the side panel hand screw, and then take down the side panel.

2. ODD Installation



2.1 Open Front Panel; Slide in ODD, then screw the ODD into position.

3. 3.5" and 2.5" HDD Installation

3.1 Open Front Panel; take out the tray, then place the HDD in position.

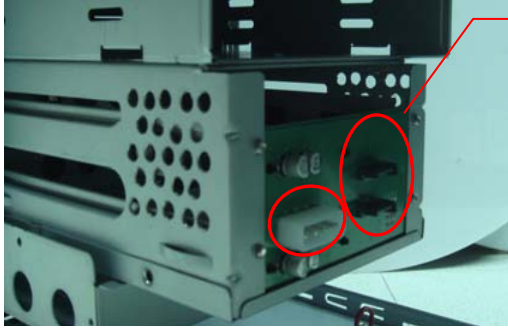


3.2 After positioning, secure the screws from the back.



3.3 Slide in the tray in position after installation, and close the tray by pressing the handle.



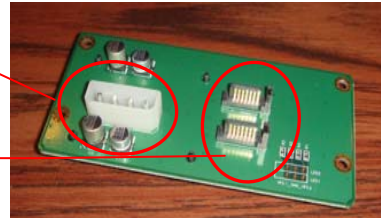


3.4 Find the 4-Pin Molex on the power supply and connect it to the backplane.

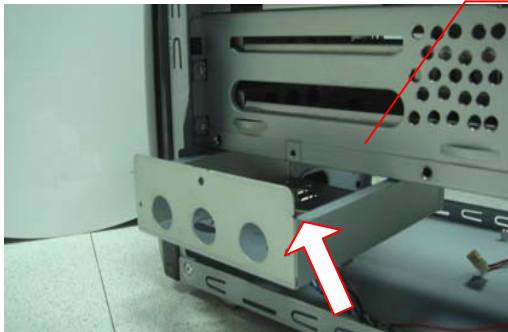
3.5 Connect the backplane to motherboard with SATA cable.

4-Pin Molex (IDE)

SATA



3.6 Hidden HDD: Unscrew the screw and open the cabinet tray, installation can proceed.



3.7 Screw the HDD on the bottom of the tray (both 3.5" and 2.5" HDD are available), slide in the HDD tray, and hook up the power connection cable to MB.

4. Expansion Slot (for Audio or Video):

4.1 One expansion slot at rear for easy installation of the add-on card

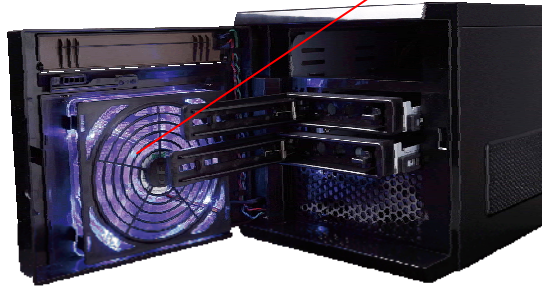


4.2 The picture shows when 3.5" HDD is installed.



4.3 The picture shows when 2.5" HDD is installed.

5. Front 12cm inhaling fan and the back 8cm exhaling fan are designed for better ventilation and thermal control:



5.1, The front 12cm fan will automatically inhale cool air into the system drives when the power is on, and the heat will exit from the side panel or sucked out by the 8cm fan at rear.

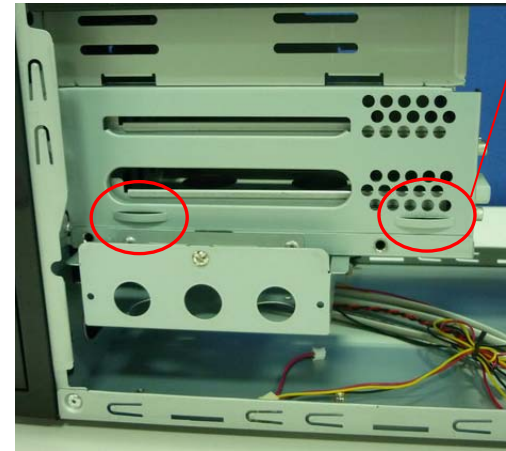


5.2 The 8cm fan at rear directly get power supply from the PSU on top, to simplify the arrangement of different cables.

Caution:

Please check the system fan regularly to make sure it's functioning properly. Recommendation of immediate change is required when the fan is malfunctioned.

6. Cable / Wire Arrangement:



6.1 Use the cable tie that is in the accessory screw bag, arrange the cables to tie along with the chassis, to make sure air ventilation is not affected.

NOTE

1. ***This manual is not designed to cover CPU, RAM or Add-on card installation.***
2. ***Please make sure your Motherboard supports HOT SWAP function. (ie. AHCI mode)***
3. ***Please remember to reset your BIOS to allow HOT SWAP function.***