



User's manual

www.itek.it

CONTENTS

Chapter 1. Product Introduction

Specification.....4

Contents of Tool Box.....5

Chapter 2. Installation

Removing and Installing Side Panels.....5

Installing the Motherboard5

External 5.25” Drive Bay Installation.....6

External 3.5” Drive Bay Installation.....7

Top Panel 3.5” or 2.5” Drive Bay Installation.....8

Internal 2.5” & 3.5” Drive Bay Installation.....9- 10

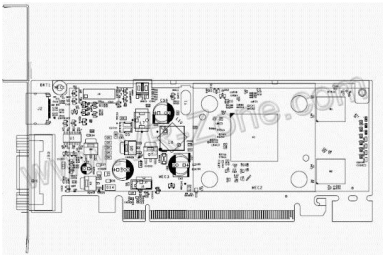
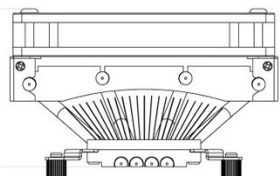
Installing Power Supply.....10-11

Installing the Case Fan.....11-12

Being water cooling ready.....13

Warning:

- Height limit for CPU cooler is 150mm.
- Length limit for VGA card is 330cm.



Chapter 1: Introduction

Specifications:



Dimensions	202(W) x 505(H) x 500(D) mm
Material	Chassis: SECC Front Panel: ABS
Drive Bay	5.25" x 4 (exposed) 3.5" x 2 (hot swappable tray) 2.5" x 2 (hidden) 3.5" x 5 (hidden)
HDD Docking	1 x 3.5" or 1 x 2.5"
Front I/O	USB2.0 (option 3.0) x 2 + HD Audio + eSATA x 1
LED Indicator	Power & HDD
Cooling Fan	Front: 14cm x 1 and 8cm x 1 Rear: 12cm x 1 Side: 12cm x 2 or 20cm x 1 (option) Top: 12cm x 2 or 14cm x 2 (option)
Motherboard	Standard ATX/mATX
Expansion Slot	7
Power Supply	Standard PS2 (option)

Contents of Tool Box

- 1 set x Screw Bag
- 1 pc x Buzzer
- 1 pc x User' s manual
- 1 pc x White Box

Chapter 2: Installation

Removing and Installing Side Panels

- 1.Remove the thumb screws from the back and pull the side panel backward to remove it.
- 2.Fit the hooks of the panel to the elongated holes on the edges of casing, and slide the panel toward and secure with screws to install the panel.



Installing the Motherboard

- 1.Install the I/O panel that comes with motherboard package.
- 2.Aim at the holes on the motherboard, and secure the standoffs on motherboard tray.



3.Align the holes of motherboard and motherboard tray, and secure the motherboard with the provided screws.

NOTE: CPU, RAM and any peripheral installation are not included in this manual. Please refer to your motherboard manual for related mounting instructions and troubleshooting.

External 5.25" Drive Bay Installation

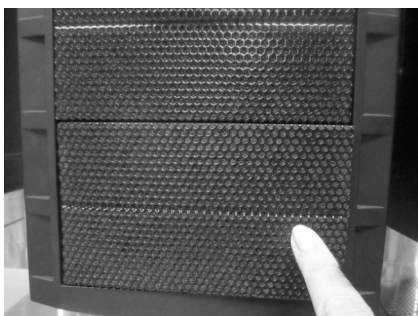
1.Remove the drive bay cover from case interior, and slide in the 5.25" ODD drive from the front of the chassis.

2.Match the ODD drive holes with the drive cage and securing with the knob that fixed onto the drive cage.



External 3.5" Drive Bay Installation

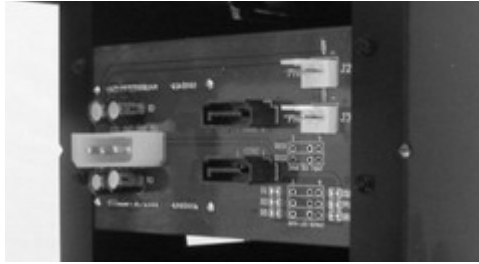
1. Open the front door by pressing the right side of the front panel, and take out the HDD Tray.



2. Attach the 3.5" drive to the tray and secure with the provided screws.



3. Slide the tray back to the drive cage and the 3.5" drive will connect to the backplane at rear.
4. Find the 4-Pin Molex on the power supply and connect it to the backplane.
Connect the backplane to motherboard with SATA cable.



Top Panel 3.5" or 2.5" HDD Docking

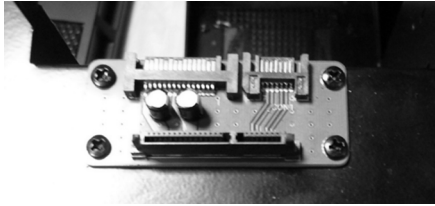
1. Insert the SATA HDD to the docking vertically to the right position, make sure the HDD has connected to the pre-installed backplane inside.



2. The docking is designed at its right size of 3.5" or 2.5" .



3.Pre-installed backplane is ready to use for hot plug purpose.



Internal 2.5" & 3.5" Drive Bay Installation

1.Pressing the sliding rail that fixed onto the drive cage and slide in the 2.5" drives into the right position.



3.Slide in the 3.5” drive to the right position.

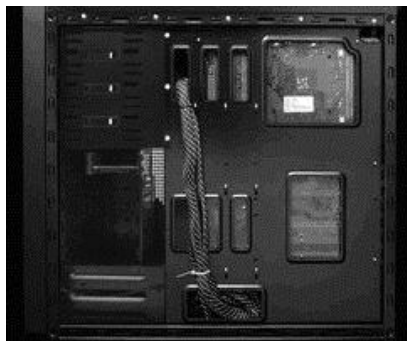


Installing Power supply

1.Securing the power supply to the case with the provided screws.



2.Simply route the cables behind the motherboard tray and part power cables with the provided cable tie.



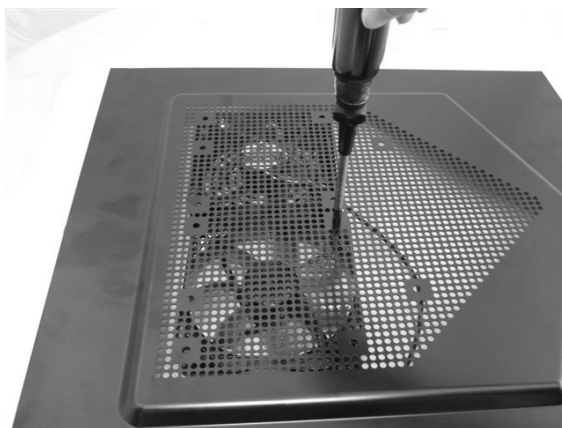
3.Pull out the washable dust filter that placed beneath of power supply for regular cleaning.



Installing the Case Fan

Installing fan on side panel

1.Install the fan from inside of side panel with the provided screws.



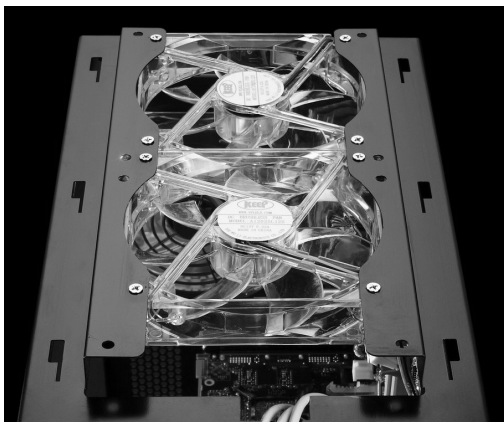
2.User can install up to two 120mm fan or one 200mm fan on the left side panel.

Installing fan on top panel and rear panel

1. Unscrew the top cover and take out it by pulling the top cover backward.



2. Install the fan with the provided screws.



Being water cooling ready

1.Pre-drilled water cooling (3) holes at rear.



2.Screw holes are drilled on the top cover for a dual 120mm radiator.

